



ABOUT CALVARY HOSPITAL

Founded in 1899, Calvary Hospital is the nation's only fully accredited acute care specialty hospital devoted to providing palliative care to adult patients with advanced cancer and other life-limiting illnesses, without regard to race, religion, or economic status.

Calvary's continuum of care includes inpatient care, home care, hospice, bereavement care, and extensive support programs for patients, families, and friends. Each year, Calvary cares for thousands of patients and their families.

CalvaryCareSM is founded in the guiding principles of compassion, respect for the dignity of every patient, and non-abandonment of our patients and families. Our primary goal is to address the physical, emotional and spiritual needs of the patient and their families.

For more information:

Please log on to www.calvaryhospital.org or call us at (718) 518-2465.

Calvary Hospital, Inc.

1740 Eastchester Road, Bronx, NY 10461
tel (718) 518-2000 fax (718) 518-2674

Calvary Brooklyn Campus

150 55th Street, Brooklyn, NY 11220
tel (718) 630-6666 fax (718) 630-6680

The Dawn Greene Hospice

at Mary Manning Walsh Home
1339 York Avenue, New York, NY 10021
tel (718) 518-2465

Ozanam Hall of Queens Nursing Home

42-41 201st Street, Bayside, NY 11361
tel (718) 518-2465

To support our unique mission with a tax-deductible gift to the Calvary Fund, please visit our website www.calvaryhospital.org or call (718) 518-2077.

Stay connected with us on Facebook.

Please visit www.calvaryhospital.org and click on the Facebook logo at the bottom of the page.

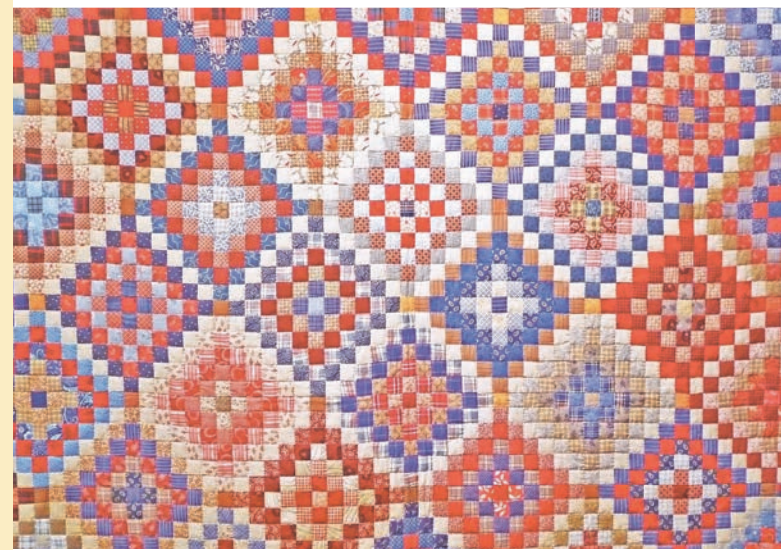
Calvary Hospital complies with applicable Federal civil rights laws and does not discriminate on the basis of race, color, national origin, age, disability, or sex.

**CALVARY
HOSPITAL**
Calvary@Home

Where Life Continues



CALVARY@HOME



**CALVARY
HOSPITAL**
Calvary@Home

Where Life Continues

Overview

We treat the physical, emotional and spiritual needs of the patient and the family. *CalvaryCareSM* means effective pain and symptom management along with ensuring the best quality of life for patients and their families.

Calvary Hospice is New York State certified as well as a Medicare-certified program that provides interdisciplinary palliative care for patients. Palliative care is the active care of patients whose disease is not responsive to curative treatment.

Levels of Care

Home Setting

We care for patients in the familiar, comfortable surroundings of their home, whether it's a private residence, nursing facility or assisted living facility.

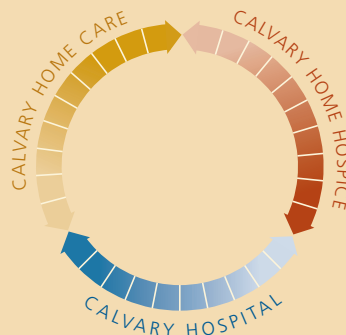
Inpatient Options

When needed, Calvary hospice also provides short-term symptom management care in an inpatient setting.

The options include:

- Calvary's Bronx or Brooklyn Campuses;
- The Dawn Greene Hospice at Mary Manning Walsh Home in Manhattan; and
- Ozanam Hall of Queens Nursing Home.

The Calvary Continuum



- We often facilitate admission to inpatient care for symptom management.
- We provide information on all Calvary programs.



Medicare pays for Hospice care under the following conditions:

- Patient has Medicare Part A.
- Patient selects Hospice benefit instead of standard Medicare benefits for the illness.
- The patient may revoke the Hospice benefit at any time.
- If the patient chooses to revoke Hospice status, Medicare or other coverage is reinstated.

Patients are encouraged to continue with their personal doctors. Calvary works with doctors to establish a plan that supports the quality of life for patients and their families. The Medical Director at Calvary Hospice works closely with patients' personal doctors.

Referring Patients

Referrals to Calvary Home Hospice Care may be made by patients, family members, friends, hospitals, clinics, physicians, other health care professionals and community agencies.

To make a referral or to learn more about our services, please call: (718) 518-2465

Home Hospice Services

Hospice services include but are not limited to:

- Visits by nurses, physicians, medical social workers
- Personal care provided by home health aides
- 24-hour on-call Registered Nurse
- Symptom and pain management
- Pastoral care for all major faith traditions
- Short-term inpatient care
- Medical supplies and equipment related to the terminal illness
- DNR (Do Not Resuscitate) is NOT required
- Transition to inpatient hospitalization at Calvary Hospital or The Dawn Greene Hospice as needed
- Ancillary services and therapies as needed

